



US 50 PEDESTRIAN IMPROVEMENTS

12th Street and 13th Street Alternatives

Permitted Movements

12th Street

Right Turns To/From US 50
Left Turns From US 50

13th Street

Rights Turn Only



US 50 West Cañon City Access Control Plan Concept

Prohibited Movements

12th Street

Left Turns To US 50

13th Street

Left Turns To/From US 50

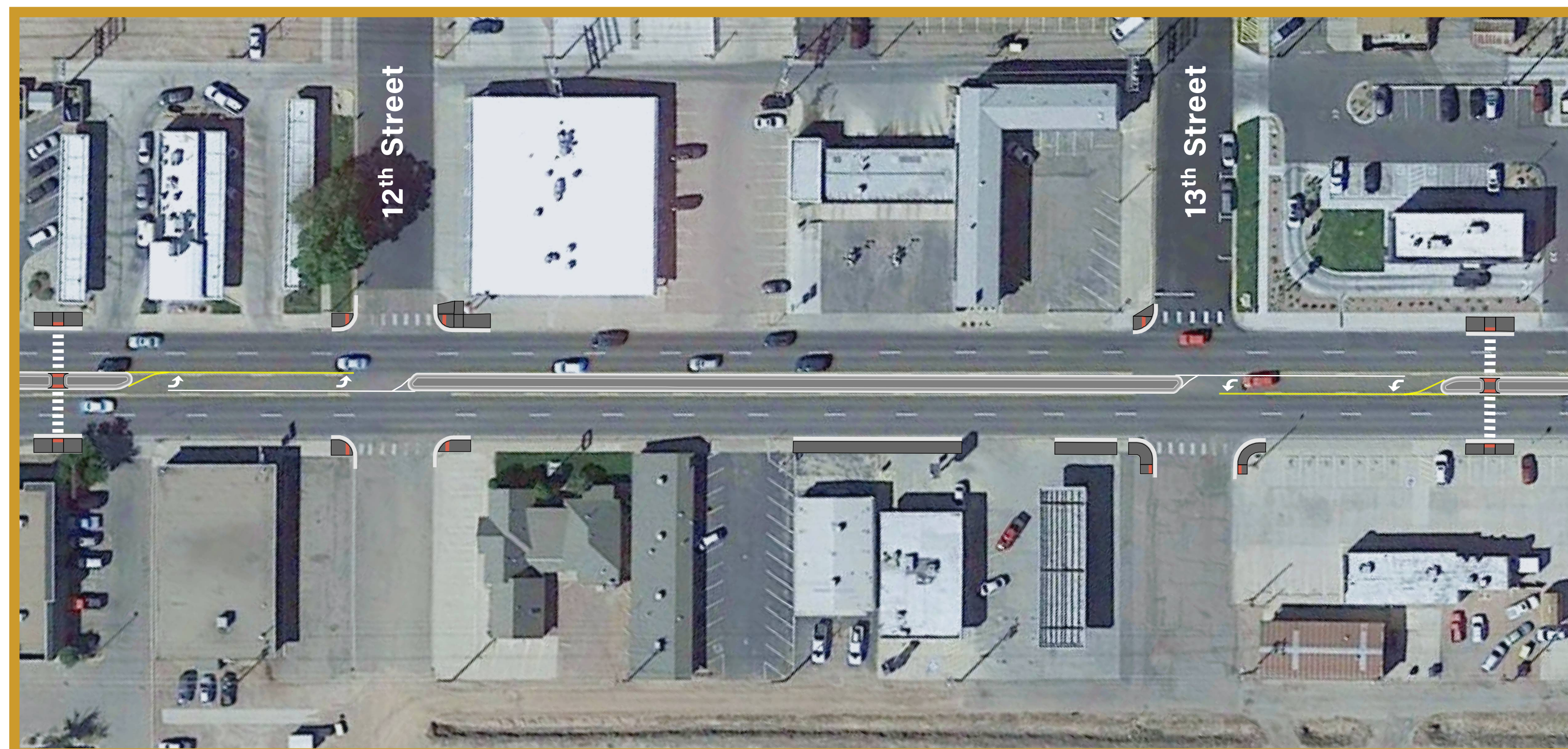
Permitted Movements

12th Street

Right Turns To/From US 50
Left Turns From
Eastbound US 50
To 12th Street

13th Street

Right Turns To/From US 50
Left Turns From
Westbound US 50
To 13th Street



Alternative Access Concept
(Requires Council Approval)

Prohibited Movements

12th Street

Left Turns To/From US 50
(Except Eastbound
To Northbound)

13th Street

Left Turns To/From US 50
(Except Westbound
To Southbound)